

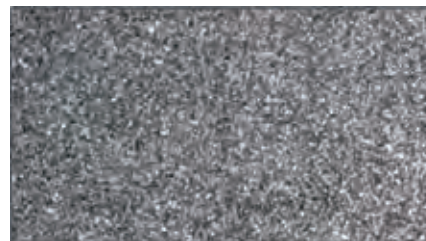
# CEMENTED CARBIDE PELLET

## Description

- ① Cemented carbide pellet is a kind of dark gray and spherical or near spherical carbide cement, which is made of WC and Co through granulating, pressing and sintered. Carbide cement pellet has high hardness(HV0.1:1400–1600), excellent abrasion and erosion resistance.
- ② Cemented carbide pellet is used to prepare wear resistance welding rod, spray fused powder and deposited powder. Widely used in surface pre-strengthening and wear repairing, such as mines, oil(bits, wear resistance belt), metallurgical industries, construction machinery, agricultural machinery and iron&steel industries etc.



Carbide Cemented carbide



Metallograph of carbide Cemented carbide

## Grade and Chemical Compositions

Grade	Chemical Composition (%)					
	Co	T.C	F.C	Ti	Fe	O
ZTC31	6.5–7.2	5.4–5.8	≤0.1	≤0.5	≤0.5	≤0.8
ZTC32	3.5–4.0	5.5–5.9	≤0.1	≤0.5	≤0.5	≤0.8
ZTC33	5.7–6.3	5.4–5.8	≤0.1	≤0.5	≤0.5	≤0.3

## Microstructure and Physical Properties

Grade	Physical properties		Microstructure		
	Density (g/cm <sup>3</sup> )	Hardness (HV)	Porosity (≤)	Free Carbon (≤)	
ZTC31	14.5~15.0	≥1400	A04B04	C04	No decarburization No cobalt aggregated
ZTC32	14.8~15.3	≥1500	A04B04	C04	
ZTC33	14.5~15.0	≥1400	A04B04	C02	